

NORTHWEST AREA

1

FRONTIER SPORTS
 Deli Max • Pizza • Subs • Soups • Gas-Oil • Boat-Tackle • Gifts
 Open 7 Days 6 am - 9 pm
 218-832-3901 Marcell, MN Fax 218-832-2903
 frontier@bigfork.net www.frontiersports.net

2

White Oak Inn and Suites & OutPost Bar and Grill
 • Trail Outside the Door Go Anywhere
 • One Stop for All Your Dining Needs,
 • Jacuzzi Suites
 • Party Room
 Stay and Play at White Oak Inn and Suites and the OutPost Bar and Grill
 877-633-5504
 218-246-9686 • 218-246-9400

3

LAKE WINNIE'S GOSH DAM PLACE
BAR • MOTEL
RESTAURANT
 Intersection of Co. Rd. 19 & Hwy. 46, 1 Mi. to Big Winnie Access Gas Station Adjacent From Business
 (218) 246-8202 www.goshdamplace.com

4

NORTHERN STAR COOPERATIVE
 • Ample parking for trailers
 • A&W • Caribou Coffee • Pizza Hut
 • Freshway Subs • No Lead & Premium
OPEN 7 DAYS A WEEK:
 5:00 am - 11:00 pm
CONVENIENCE STORE ON US #2 IN DEER RIVER

5

FISH TALES BAR & GRILL
 Open 11 am, Mondays, Tuesday & Wednesday, Breakfast 8 am, Thursday, Friday, Saturday and Sunday, PULL TABS • ON-OFF SALE, BIGGEST BEER SELECTION IN THE AREA!
 Squaw Lake, MN fishtalesbarandgrill.com 218-659-4988

6

FISHER PETROLEUM, INC.
 24 HOUR GAS
 PARTS ~ CAR WASH
 SHOWERS ~ C-STORE
 BAIT & TACKLE
 LOTTERY TICKETS
 TIRE REPAIR
Northome 218-897-5249

7

NORTHERN MOTOR SPORTS
 313 Main Avenue West • Deer River
 Specialists In:
 Marine • ATV • Snowmobile • Parts • Performance Auto
 Consignment Sales
 218-246-9755

8

WINNIE TRADING POST
 12 Miles North of Deer River On Hwy 46

Bait, Tackle, Gas, Groceries ~ 218-246-9630 ~

9

RILEY'S CANNIBAL CAFE
 • Full service bar & restaurant
 • Open 7 days a week
 • Off Sale • Pull Tabs • ATM
 • Weekly Specials - Great Food
 46551 Riley Road, Deer River, MN (218) 832-3656

10

TAKE THE TRAIL TO....
 • Lodge • Restaurant
 • Cocktail Bar • Comfy Cabins
 • Kids Stay Free • Family Activities
 Top Rated Fishing!
 Miles and Miles of Scenic ATV Trails Direct From Your Cabin!
 218-246-2560
www.highbanks.com

11

ARCADIA LODGE
 CLOSE AND EASY ACCESS TO TRAILS
 Located on Big Turtle Lake, close to Maple & Bello Lakes • Cabins up to 11 bedrooms
 • Full Kitchens • Gas Fireplaces • Satellite TV
www.arcadialodge.com
 1-218-832-3852 stay@arcadialodge.com

12

HOT N HOLLER
 Junction of Hwy 46 & Cty Rd 13
 On Snowmobile Trail
 • 14 GRAHA
 Electronic Pulltabs & Bingo
 • 2 am License • Pool • Pizza
 • On Sale/Off Sale
 218-659-9225
Alvwood, MN Visit us on Facebook

13


6 Cabins, Campground and Boat Rentals
www.risingeagleresort.com
 On Jessie Lake
 218-832-3955

14

MAX MINI STORE
 50758 State Hwy. 46
 Squaw Lake, MN
218-659-4235
 • Gas • Diesel • Groceries • Deli Express • Bait
 • Licenses • Hardware • Sporting Goods
 ★ 24 HOUR PAY AT THE PUMP ★
 • ATM • Crafts & Gifts • Propane Exchange
 starting May 4th
SUMMER HOURS: Sunday-Saturday 6 am-10 pm

15

Jourdan's Family Diner
 12223 2nd Street,
 Northome, MN 56661
 218.897.5388
 Like us on Facebook!
Homemade Pizzas!
Hours:
 Mon-Wed 6 am-2 pm
 Thursday 6 am-6 pm
 Fri-Sat 6 am-8 pm
 Sunday 6 am - 6 pm
 (shorter hours in winter)
WEEKEND SPECIALS!

16

THE CITY OF NORTHOME WELCOMES YOU
 On/Off Sale Liquor LOUNGE & Outdoor Patio
 218-897-9501
 CITY HALL
 218-897-5762
 CITY LIBRARY
 Great Selection children's Section
 24/7 LAUNDROMAT
 Over-sized washer & dryer
 Wi-Fi throughout the building

17

Shining Light Café
 Open Mon.-Sat. 7-7
 Open Sundays 7-2
 Main Street Northome, MN 218-897-9786

18

North Star Lake Resort
 • Family Resort • Heated Pool • 17 Cabins • ATV Friendly
Marcell, MN • 218-832-3131
www.northstarlakeresort.com

19

SCENIC PINES STORE
 Gas & Diesel • Non-Oxy Premium
 Off-Sale Liquor • Groceries • ATM • Ice
 Bait • Tackle • Feed • Hardware • Propane
 218-245-1277

20

Scenic Pines Bar & Grill
 A Beautiful Natural Log Restaurant & Bar
 with a cozy atmosphere serving lunch & dinner
 specials with a full bar service.
 NEW OWNERSHIP! - Open 7 Days A Week!
 Breakfast - Friday, Saturday & Sunday
 Open 11 am-11 pm Monday-Thursday
 8 am-1 am Friday & Saturday
 8 am-11 pm Sunday
 Prime Rib on Saturdays
 1/2 Mile N. of Swampsciders just off the Taconite on Herb Brandstrom Trail
 (218)245-1818 • ATM on site

21

GOLF on the Edge
Bar & Restaurant Open Year Round!
 1 mile off Hwy 38 on Co Rd 261, East of Bigfork Valley Hospital
 • 218-743-3626
www.golftotheedge.com

22

Loon Point Resort
 Luxury on the Lake
 Top notch secluded resort located on a private lake
 • 4 NEW Full Log Cabins
 • A Private Lakehome
 • 4 Newly Remodeled Lake Cabins
 • Fireplaces, King Beds, A/C
 • Water Tumbling, Water Mat,
 Kayaks, SUP's, Canoes and Hydro-Paddlers
 1-800-542-1470
www.loonpointresortmn.com

23

THE BALSAM STORE
 Gas • Groceries • ATM • Deli Express
 24 Hour Pay At The Pump
 Ice • Bait • Propane • Lottery Tickets
 Hardware • Hunting Licenses • Free Parking
218-910-9595
 In the heart of greater downtown Balsam at the intersection of Scenic Highway 7 & 8 Just off the Taconite on the Delbert Brandstrom Trail

24

Swan Lake Sinclair
 Gas - Groceries - ATM
 Highway 65 Pengilly, MN
 • 218-885-3806

25

LAWRENCE LAKE LIQUOR
 On/Off Sale Liquor • Frozen Pizza • Event Room
 M-Th 11 am-11 pm, F & S 11 am-1 am, S 11 am-8 pm
 FREE TRAILER PARKING AVAILABLE
 Open Sun-Thurs 7 am-7 pm Fri. & Sat. 7 am-8 pm
SCENIC HIGHWAY 7, BOVEY • 245-2367

26

ANTLER LAKE STORE & MOTEL
 • 12 Room Motel with Queen & Full Size Beds
 • Liquor Store • Large Whittop, Sauna, Game Room
 • 24 Hours A Day Fuel • Off Sale • Groceries • Belts
 • Spark Plugs • More Reservations 218-245-2369
 *Snowmobile from your room onto Herb Brandstrom Trail!
 Open Sun-Thurs 7 am-7 pm Fri. & Sat. 7 am-8 pm
SCENIC HIGHWAY 7, 35 Miles North of Grand Rapids

27

ANTLER LODGE
 Ye Olde Eatery & Saloon
 • Full Menu • On/Off Sale Liquor • Major Credit Cards Accepted
 Call for restaurant hours 218-245-1136
 Scenic Highway 7, 35 Miles North of Grand Rapids

28

TIMBERWOLF INN
 "On the Edge of the Wilderness"
 Nightly Specials • Lodging • Restaurant
 Lounge • On/Off Sale Liquor • Pull Tabs
 8 rooms w/2 queens, 2 rooms w/kings.
 All rooms have refrigerator, microwave & cable. WiFi available.
 Located on Marcell Trail, 2 miles North of Marcell
 Hwy. 38 & Jack the Horse Road, Marcell
 (218) 832-3990
timberwolfinn.com email: twloff@bigfork.net

29

LAKESIDE LUMBER & HARDWARE
Marcell, MN 218-832-3300
www.lakesidemarcell.com
 Golden Rule Lumber Co. Inc.
 facebook
 49208 State Hwy 38, Marcell, MN 56657

30

Junction Bar & Grill
 Hours: Monday-Friday 11 am-1 am
 Saturday & Sunday 9 am-1 am
 Daily Full Menu • On/Off Sale • Gas
 Daily Specials Monday-Thursday
 All You Can Eat Fish Fridays
 Prime Rib Saturdays
 (218) 376-4687
Togo, MN

31

MJ's LODGE & RESORT
 MJ's Lodge & Resort is a family owned and operated resort on Swan Lake.
 We offer cabins, camper hook-ups, dining and on/off sale bar.

32

Wilderness Wheelers
 We are headquartered in Bigfork, MN.
 Meetings are the 4th Monday of each month April - October, 6 pm at Bigfork City Hall. Info call 218-259-5938
www.wildernesswheelers.com

33

EFFIE COUNTRY SERVICE
 Gas/Diesel • Snowmobile Oil • Fresh Subs & Pizza
 Off Sale Liquor • 24 Hour Towing
 Right on the Scenic Connection
After Hours 218-743-3859 - Open 365 Days
 M-F 5 am-9 pm; Sat 6 am-9 pm & Sun 7 am - 8 pm
26 Years • Established 1993

34

K-M CORNER STORE
 Formerly known as Corner's Corner Store
 3 miles N on Hwy 65
 • Bait • Tackle • Licenses • Bottle Shop
 • Lottery • Full Menu • Churned
 • Tacos & Sandwiches to Order
 • Propane filled on site full service Gas
 • Like us on FB! K&M Corner Store MN
 Mon-Fri 6-10 Sat-Sun 7-10 | 218-885-2472

35

NEIGHBORHOOD TAVERN
 "We Have More Fun In Effie!"
 107 SE Hwy 1, Effie
 218-743-3286
 • Burgers
 • Off-Sale
 • Pulltabs
 • Games

36

DON'T FORGET SNACKS FOR THE TRAIL
HOME OF FRED'S COUNTRY STYLE
 SINCE 1944
 SAUSAGE
 GAS
 BEVERAGES
 218-492-4477

37

All Seasons Services
 Service • Repair • Welding
 Cars • Trucks • Small Engine • ATV
 Snowmobile • UTV
31152 Hwy. 65, Pengilly
Mon.-Fri. 8am-6pm; Sat. 10am-4pm
218-885-9922
 AllSeasonsServicesMN@gmail.com

38

NORTH ITASCA ELECTRIC
 301 Main Ave. Bigfork, MN
218-743-3131 or 800-762-4048
www.northitascaelectric.com
 As you ride by on Itasca's trails, stop by and pick up a Pelican cooler and travel mug. We also have great grills and generators for when your ride ends.

Thank you to the many supporters, volunteers, and contributors who have made Itasca County's ATV Trails what they are. We value the continued support from our businesses, residents, and visitors of Itasca County. A HUGE thank you to the local ATV Clubs and the Minnesota Grant-In-Aid Trail Assistance Program for maintaining and signing these trails. Your dedication and hard work is greatly appreciated!





GRANT-IN-AID TRAIL
 A Cooperative Project For Outdoor Recreation
 Trail User Organizations
 Local Unit of Government
 Minnesota Department of Natural Resources

DIRT ALERT
 IT DEPENDS ON YOU!
 RESPECT is the Key to Keeping Your Privilege to Ride on Public Land.
 RESPECT FOR THE ENVIRONMENT
 RESPECT FOR OTHERS
 RESPECT FOR YOURSELF
 RESPECT FOR EQUIPMENT
 RESPECT FOR AUTHORITY

U.S./State Highways follow under Minnesota Dept. of Transportation. Class I & II ATV riders must be within the road right of way **NOT** on shoulder or road surface of a U.S. Highway or State Highway.

Itasca County ATV Ordinance:
 -Itasca County has adopted an ordinance that allows the operation of all-terrain vehicles (ATVs) on all county roads, with the exception of CSAH 75 into Scenic State Park. Ordinance does not include US/State Highways.
 -Does not include conditions for speed, headlights, helmets required under the age of 18 and unsafe operations, which is already covered by State statute and rules.
 -Please review Itasca County Ordinance for further information on the County website

City Ordinances:
 -City of Grand Rapids: ATVs shall not be operated within the central business district of the city and on the US/State highways that run through town. The central business district restricted area map may be obtained through the Grand Rapids Police Department.
 -Please visit other City websites or call City Offices for information on posted City ATV ordinances.

OHV Riding Restrictions During Deer Hunting Season:
 -Use of off-highway vehicles (OHVs) on state forest OHV trails and state forest trails during firearms deer season is allowed only for deer-hunting purposes, and only within permitted times.




ALL-TERRAIN VEHICLE ASSOCIATION OF MINNESOTA

P.O. Box 300

Stacy, MN 55079

1-800-HI-ATVAM

atvamoffice@atvam.org

www.atvam.org

Respect Private Property

Ask First

WHAT YOU SHOULD DO IF YOU ENCOUNTER AN ACTIVE LOGGING OPERATION ON A TRAIL...

- Use **CAUTION** around logging activity near the trail
- Stay back a minimum of 200 feet from any logging equipment
- Use any re-routes established
- Watch for Logging trucks hauling
- Comply with signs posted; they protect you and the operation
- Stay on trail; **DO NOT** approach any of the equipment

YOU CAN SEE AND HEAR THEM, BUT THE OPERATOR MAY NOT SEE OR HEAR YOU!


Itasca County Land Department • 1177 LaPrairie Avenue - Grand Rapids, MN 55744 • 218-327-2855





Where to Ride Your Off-Highway Vehicle
www.findthetrails.com

NORTHEAST AREA

39

Marcell Lodge
 Terrific Cabin Rental
 ~ Close To Great ATV Trails ~
 218-832-3161 www.marcelllodge.com
 49554 State Hwy. 38 • Marcell, MN 56657

40

Range Riders ATV Club
Nashauk, MN Est. 1992
 Find us on the Web or Facebook
 • Albion/Pengilly ATV Trail Grant-In-Aid Club
 • Youth ATV Safety Training as Required by MN Law
 • DNR Trail Ambassador Program

41

ITASCA COUNTY ATV ALLIANCE
 would like to Thank all the Businesses, Clubs and Sponsors for making this map possible.
 "Enjoy the Ride"

42

Balsam Trailblazers ATV Club
Art Daly • 218-245-3209
 Support your local businesses and clubs.
 "See you on the trail"



GRAND RAPIDS AREA

43

granditasca
 Clinic & Hospital
 Part of Fairview Health Services
 Rapid Clinic - Open 7 days/week
 10 am - 8 pm
 Emergency Department - Available 24/7
 • Main Line 218-326-3401
 • Appointment Line 218-326-7344
 1601 Golf Course Road, Grand Rapids, MN 55744
www.granditasca.org

44

Timberlake Lodge
 218-326-2600 • 1-866-800-2200
www.timberlakelodgehotel.com
 144 SE 17th Street, Grand Rapids, MN
 • Spacious Rooms
 • Free Hot Breakfast
 • Waterpark
 • 17th Street Grill

45

CHAMBER OF COMMERCE
 "Chamber Members are the right place to do business."
 Grand Rapids Area
 One HWY 38 S • Grand Rapids, MN 55744
 Phone: 218-326-6819
 800-472-6886
 Fax: 218-326-4825
 E-Mail: huc@grandmn.com
 Bud Stone - President
www.grandmn.com

46

MIDWAY REPAIR
 25559 US HWY 2 Grand Rapids, MN 55744
 We repair all makes & models of ATVs
 218-327-3335

47

AmericInn
 Welcome to the end of the day.
15% DISCOUNT
 on any guest room
 For reservations call direct 218-326-8999 or visit www.americinn.com
 • 58 guest rooms including whirlpool suites
 • Direct Access to Trails
 • Gas, Restaurants & Bars nearby
 • Free Wi-Fi
 • Indoor Pool and Hot Tub
 • Complimentary AmericInn Perk Breakfast

48

NATIONAL AWARD WINNING PROPERTY
Super 8
 • Hot Continental Breakfast
 • Tons of Trailer Parking
 218-327-1108
www.super8.com
 1702 Pokegama Avenue South, Grand Rapids, MN

49

EDGE OF THE WILDERNESS LAKES & HOMES REALTY
 Visit our Facebook Page or website: **www.EOWRealty.com**
 GRAND RAPIDS OFFICE
 501 S. Pokegama Ave.
 218-326-3411
 MARCELL OFFICE
 48921 State Hwy. 38
 218-832-4000

50

GRAND RAPIDS CHEVROLET
 1610 Pokegama Ave S, Grand Rapids MN
 SALES 218-212-1132 • SERVICE 218-212-2125
 1-800-542-3325
 Hours Monday-Friday 8-6 • Saturday 9-3
www.grandrapidsgm.com

51

THUNDER ALLEY XL
 FAMILY ENTERTAINMENT CENTER
Bowling, Arcade, Pizza & Full Bar
 218-326-5950 www.thunderalleyxl.com

52

WILDWOOD RESORT
 www.wildwoodresort.net
 218-328-5858
 • Stay 2 nights and get a 3rd night FREE
 • Direct access to trails
 • 5 miles from Grand Rapids for dining and shopping
 • Lakeside cabins with full amenities

53

MARTIN'S SNOWPLOW SERVICE
 Let us take care of your equipment needs!
 • Parts • Installation • Repair
 East Cohasset - 105 West US Highway 2,
 Cohasset, MN 55721
 218-327-2658
www.danmartinsnowplow.com

For Lodging Information


www.edgeofthewilderness.com

www.visitgrandrapids.com/stay

GrandRapids HeraldReview and Manney's LOCAL Connection

• NEWS

• EVENTS

• SPORTS

• ADVERTISING

IN PRINT, ON-LINE & MOBILE!

For more information contact us at 218-326-6623

www.grandrapidsmn.com

SOUTH AREA

54

POKEGAMA LAKE STORE
 • Convenience Store
 • Gas • Bait
 • Beer/Liquor
 2 Blocks South of Pokegama Lake on Highway 169
Winter Hours: 6 am-9 pm Sunday-Thursday
 6 am-10 pm Friday & Saturday

55

Rapids Riders ATV Club
 www.rfatv.org

56

Ray's SPORT & CYCLE
 POLARIS
 can-am
 HONDA
 YAMAHA
 Mon.-Fri. 8:30-6:00; Sat. 8:30-3:00
 20890 US Hwy. 169, South Grand Rapids, MN
 218-316-9355
www.raysportandcycle.com

LIGHTS: Turn your lights on for safety and obey the law. If your ATV is equipped with a headlight and taillight, they must be on at all times when operating the ATV.

57

POKEGAMA LAWN & SPORT
 20648 US Highway 169, Grand Rapids
 218-326-1200 www.lawnandsport.com

58

HARRY'S BAR & GRILL
 • Great Food
 • Pulled Pork Weekly
 • Brisket Fridays
 • BBQ Ribs Saturdays
 137 S. Gill Street, Hill City, MN 697-9591

59

140 East Lake Avenue Hill City, MN
218-697-2825

60

PCB LIQUOR • DANCING • FOOD
Stop In For Great Food!
 6691 MN 200
 Remer, MN
218-566-1698

61

SUNNY'S
 24 HOUR PAY AT THE PUMP
 • Gas • Convenience Store • Pizza & Subs
 101 Highway 200 E, Hill City, MN • 218-697-2306
 OPEN 5:00 AM - 10:00 PM

Obey All Trail Signs



FREQUENTLY ASKED QUESTIONS

Question: I'm a Minnesota resident and my ATV is registered in Wisconsin. Do I need the nonresident trail pass?

Answer: No, residents do not need this trail pass even if their vehicle is registered in a different state.

Question: Can I drive my ATV on the side of a road?

Answer: It depends on the type of ATV you are driving, the type of road you are on, and the age of the operator.

Question: Can I operate an OHM in the ditches?

Answer: No, OHMs cannot be operated in ditches unless on a trail designated for that specific vehicle type.

Question: Can I ride my ATV or OHM on a snowmobile trail?

Answer: No, most snowmobile trails cross private lands because of a special permit that only allows public use during the winter season by snowmobilers. Any other use may be considered trespassing.

Question: Can I operate my ATV on snowmobile trails in the winter if there's no snow?

Answer: No, in most cases snowmobile trails cross private lands by permit and are not open to ATVs or other uses. Any other use except snowmobile riding would be trespassing. Exception: Trails and roads on state forest lands remain open to public use until groomed unless signed "Closed."

Question: Where can I ride my Class I ATV?

Answer: Several trails or parts of trails are for Class I ATVs only. For a list of trails for Class I ATVs, Class 2 ATVs, OHMs and ORVs, see the riding opportunities at www.mnrdnr.gov/ohv.

©2019 State of Minnesota, Department of Natural Resources www.dnr.state.mn.us

2019 ITASCA COUNTY ATV MAP





GRAND RAPIDS Edge of the Wilderness
 IT'S IN MINNESOTA'S NATURE
WWW.VISITGRANDRAPIDS.COM
WWW.EDGEOFTHEWILDERNESS.COM



*OPEN AND CLOSE DATES ARE SUBJECT TO CHANGE BASED UPON SPRING AND FALL CONDITIONS.

*SEASONAL CLOSURES CAN OCCUR THROUGHOUT THE SEASON BASED UPON RAIN EVENTS.

*VISIT: www.dnr.state.mn.us/trailconditions/index.html FOR TRAIL CONDITIONS AND FOR FURTHER TRAIL INFORMATION.

Alborn - Pengilly Railroad ATV Trail
Range Riders ATV Club
<https://pdybenalken.wixsite.com/rangeridersatvclub>
Lou Benephe 218-885-1333
Trail Miles: 39
(7 miles are in Itasca, 32 in St. Louis)

Open to:
Opens: April 1st
Closes: November 30th
Difficulty Level: Easiest

Alvwood - Squaw Lake ATV/OHM Trail
Alvwood Squaw Lake ATV Club
Garrett Ous: 218-340-7775
Trail Miles: 159

Open to:
Opens: May 2nd
Closes: March 15th
Difficulty Level: Easiest

B & B Connection ATV/OHM Trail
Wilderness Wheelers ATV Club
<https://www.wildernesswheelers.com/>
Jim Deeg: 651-403-3925
Trail Miles: 33

Open to:
Open: May 15th
Close: November 1st
Difficulty Level: Easiest to Moderate

Balsam ATV/OHM Trail
Balsam Trailblazers ATV Club
Art Daly: 218-245-3209
Trail Miles: 9

Open to:
Opens: May 15th
Closes November 1st
Difficulty Level: Easiest

Blue Ox Trail
4 sections maintained by:

1. DNR Parks and Trails - Bemidji
Area Supervisor: David Schotzk: 218-308-2367
2. Northhome Ridge Runners ATV Club
Jack White: 218-897-5764
3. DNR Parks and Trails - Grand Rapids
Area Supervisor: Guy Lunz: 218-328-8984
4. DNR Parks and Trails - Tower
Area Supervisor: Joe Majerus: 218-300-7841

Trail Miles: 74
(23 miles in Beltrami, 11 miles in Itasca, and 40 miles in Koochiching Counties)

Open to: and portions to
Opens: April 1st
Closes November 30th
Difficulty Level: Easiest

Island Lake Connection Trail
Northhome Ridge Runners ATV Club
<https://www.northomeridgerunners.com/>
Jack White: 218-897-5764
Trail Miles: 2

Open to:
Opens: May 2nd
Closes: December 1st
Difficulty Level: Easiest

Little Moose ATV/OHM Trail
Balsam Trailblazers ATV Club
Art Daly: 218-245-3209
Trail Miles: 18

Open to:
Opens: May 15th
Closes November 1st
Difficulty Level: Easiest

Northwoods Regional ATV/OHM Trail System:
Goodland ATV/OHM Trail
Itasca Trail Riders ATV Club
Jon Korpi: 218-969-4297
Trail Miles: 19

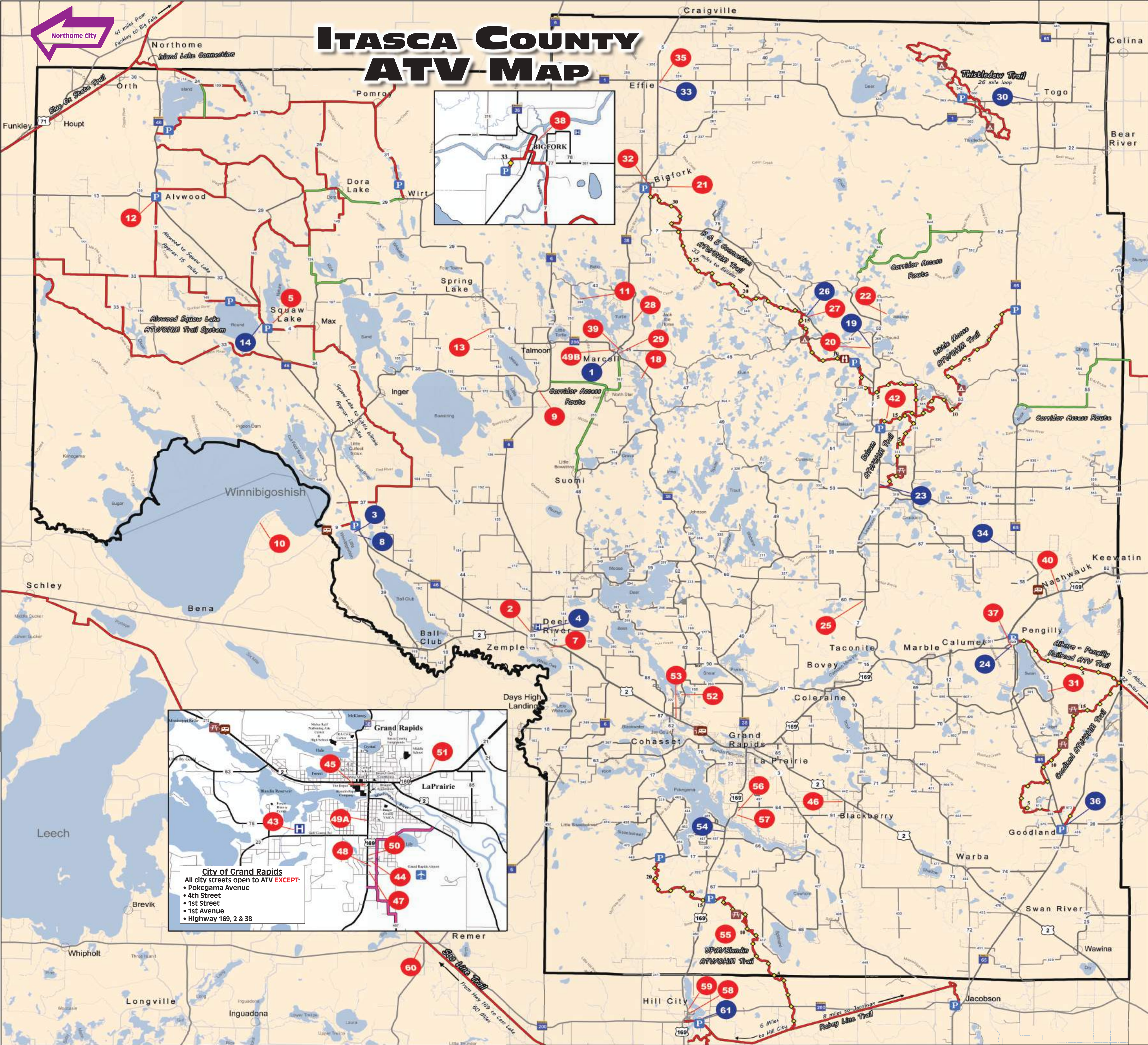
Open to:
Opens: May 15th
Closes: November 1st
Difficulty Level: Easiest

UPM - Blandin ATV/OHM Trail
Rapids Riders ATV Club
<http://www.rratv.org/>
Jerry McKnight: 218-259-6115
Trail Miles: 21

Open to:
Opens: May 15th
Closes: November 1st
Difficulty Level: Easiest

Thistledeau ATV Trail
MN DNR Parks and Trails Office
<https://www.dnr.state.mn.us/ohv/index.html>
Area Supervisor: Guy Lunz
218-328-8984
Trail Miles: 25 (shared with horses)

Open to:
Opens: April 1st
Closes: November 30th
Difficulty Level: Easiest



2019 ITASCA COUNTY ATV MAP

Trail Facilities

Parking

Overlook

Picnic Area

Dispersed Camping

Camping - RV Hookup

Mile Marker

Hospital

Designated Trails

Grant-in-Aid ATV Trails

Authorized Corridor Access Routes

Grand Rapids City ATV Trail

NORTH

01.536912

Miles

Itasca County ATV Ordinance

- Itasca County has adopted an ordinance that allows the operation of all-terrain vehicles (ATVs) on all County roads, with the exception of CSAH 75 into Scenic State Park.
- Does not include conditions for speed, headlights, helmets required under the age of 18 and unsafe operations, which is already covered by MN State Statute and rules.
- Ordinance does not include US and State Highways.
- Please review Itasca County Ordinance for further information on the County website.

MN State Regulation

- Class I and II ATV riders must be within the road right of way of a U.S. Highway or State Highway NOT on shoulder or road surface

COPYRIGHT - ITASCA COUNTY
ALL RIGHTS RESERVED
No reproduction of this map is allowed by any method or in any form without written permission.

1 Frontier Sports

2 White Oak Inn & Suites

3 Outpost Bar & Grill

4 Gosh Dam Place

5 Northern Star Cooperative

6 Fish Tales Bar & Grill

7 Fisher Petroleum

8 Northern Motor Sports

9 Winnie Trading Post

10 Riley's Cannibal Jct.

11 Arcadia Lodge

12 Hoot N' Holler

13 Rising Eagle Resort

14 Max Mini Store

15 Jourdan's Family Diner

16 Northhome Municipal

17 Shining Light Cafe

18 North Star Lake Resort

19 Scenic Pines Store

20 Scenic Pines Bar

21 Golf On The Edge

22 Loon Point Resort

23 The Balsam Store

24 Swan Lake Sinclair

25 Lawrence Lake Liquor

26 Antler Lake Store & Motel

27 Antler Lodge

28 Timberwolf Inn

29 Lakeside Lumber

30 Junction Bar & Grill

31 MJ's Lodge & Resort

32 Wilderness Wheelers

33 Effie Country Store

34 K-M Corner Store

35 Neighborhood Tavern

36 Fred's

37 All Seasons Services

38 North Itasca Electric

39 Edge of Wilderness

40 Range Riders ATV Club

41 Itasca County ATV Alliance

42 Lakeside Lumber

43 Junction Bar & Grill

44 MJ's Lodge & Resort

45 Wilderness Wheelers

46 Effie Country Store

47 K-M Corner Store

48 Neighborhood Tavern

47 AmericInn

48 Super 8

49A&B Edge of the Wilderness Realty

50 Grand Rapids GM

51 Thunder Alley XL

52 Wildwood Resort

53 Martin's Snowplow & Equipment

54 Pokegama Lake Store

55 Rapids Riders ATV Club

56 Rays's Sport & Cycle

57 AmericInn

58 Harry's Bar & Grill

59 Knucklehead's Bar & Grill

60 The Pub

61 Sunnys

Gas Available